



# **Cherry Chase Elementary**

Exploring our Strategic Plan

**Principal's Coffee**

March 14, 2025



By the end of this session, you will be able to:

- **Describe** how the district's Strategic Plan supports student learning and development.
- **Identify** key components of the Portrait of a Sunnyvale Learner and how they connect to your child's future.
- **Reflect** on how school initiatives align with your family's role in student success.
- **Explore** ways to partner with Cherry Chase to create an equitable and thriving learning environment.

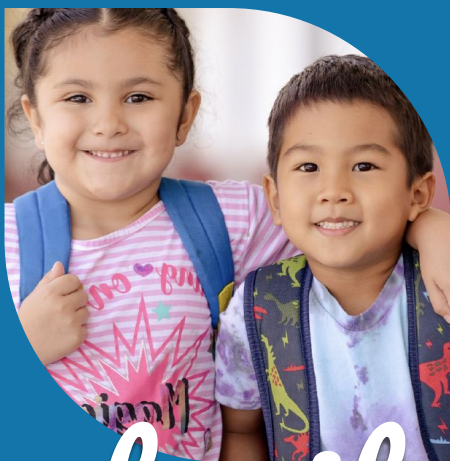


What is our Promise?

Every student is known by  
**name, strength, and need,**  
ready to excel in high  
school and beyond, and  
lead a life of joy and  
purpose.







# portrait of a learner





Critical Thinker  
& Effective  
Communicator



Critical Thinker  
& Effective  
Communicator



Effective  
Collaborator in  
a Global  
Society



Critical Thinker  
& Effective  
Communicator



Resilient Lifelong  
Learners



Effective  
Collaborator in  
a Global  
Society



Critical Thinker  
& Effective  
Communicator



Resilient Lifelong  
Learners



Healthy  
Mind & Body



Effective  
Collaborator in  
a Global  
Society





What qualities, skills, and traits do you hope your child develops as they grow?



1. **Read** the 4 areas of the Portrait of a Sunnyvale Learner.
2. **Think** about the qualities and traits you hope your child develops.
3. Use the blank student figure to visually represent these qualities. You can **write words** or **phrases**, **draw symbols** or **images** that reflect your child's future growth.



What is the most important  
skill or trait you want your  
child to carry into the  
future?



How do we support  
student success?

## Goal 1



## Goal 2



## Goal 3



## Goal 4



**Inclusive & Nurturing Environment.**

1

What have you seen at Cherry Chase that helps create a welcoming, supportive school community?

**Equitable Opportunities for Growth**

2

How has your child's teacher or school provided personalized academic or enrichment opportunities?

**Responsibility for Learning**

3

How do you encourage your child to take ownership of their learning at home?

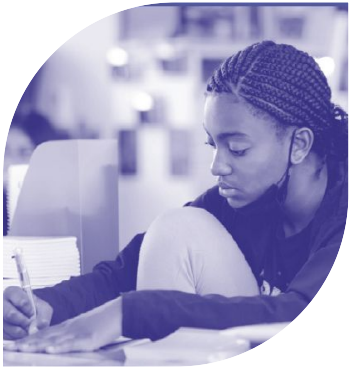
**Mastery of Core Content Areas**

4

What's one way you support your child's academic growth outside of school?

1. **Review** the 4 district goals and signature strategies.
2. **Use the 4-quadrant chart** to reflect on each goal. In each section write your response to one of these questions:
  - What have you seen at Cherry Chase that supports this goal?
  - What have you experienced with your child's teacher related to this goal?
  - What can you do to support this goal at home?





What trends do we notice?  
How do we work together to  
support these goals?





# Learning Without Limits



We believe  
in equity.

# How can we promote equity in our school community?

## Equity Statement - Give One, Get One

Read the Equity Statement and highlight a key idea that resonates with you.



Write **one action or mindset** you can embrace to promote equity in your child's school experience.



Talk with 2 partners and add one new idea to your list from each person.

**My partners' name:**

**My partners' idea:**

1. \_\_\_\_\_

\_\_\_\_\_

2. \_\_\_\_\_

\_\_\_\_\_

1. **Read** the Equity Statement. Highlight a key phrase that resonates with you.
2. What is one action or mindset you can embrace to support equity in your child's education? **Write your response.**
3. Find a partner, **share your idea**, and write down their idea in the space provided. Repeat to gather new perspectives.



How can families and schools work together to ensure all students feel supported and valued?

A photograph of a person jumping in a colorful tunnel. The tunnel is composed of a series of rectangular frames in blue, green, yellow, and purple. The person is in the center, jumping with arms and legs outstretched. The background shows a building and some greenery.

What do we value?





# How do we support core values in our school community?

## Core Values

How do the our Core Values shape your child's learning experience and the Cherry Chase community?



**3** ways you encourage these values in your child at home.

---

---

---



**2** ways you see these values in your child's school experience.

---

---



**1** **action** you can take to model these values in our school community.

---

- 1. Read** the Core Values. Think about how these values shape your child's learning.
- 2. Reflect & Write:**
  - **3 ways** you encourage these values at home.
  - **2 ways** you see these values reflected in your child's school experience.
  - **1 action** you can take to model these values in the school community.



A stylized graphic of a blue leaf with a light blue outline and a darker blue fill, positioned on the left side of the slide. The leaf is oriented vertically, with its tip pointing upwards. The word "Joy" is written in yellow text on the leaf.

**Joy**

**Compassion**

**Justice**

**Courage**

**Excellence**

What stood out to you in this reflection? How can families and schools work together to instill these values?



**When everyone in  
school learns,  
students learn  
the most.**



A stylized graphic of a plant with three leaves and a curved stem, rendered in shades of blue. The leaves are positioned to the left of the text, with one leaf pointing upwards and two pointing outwards. The stem curves downwards and to the left.

## Closing Reflections & Next Steps

- **Transformation requires action.** True transformation happens when we redesign how we support student learning.
- **Every child thrives when schools and families partner with intention.** What we model today shapes the future we want for our children.
- **Let's keep the conversation going.** Join us in creating a learning environment where every student feels valued, challenged, and supported.